

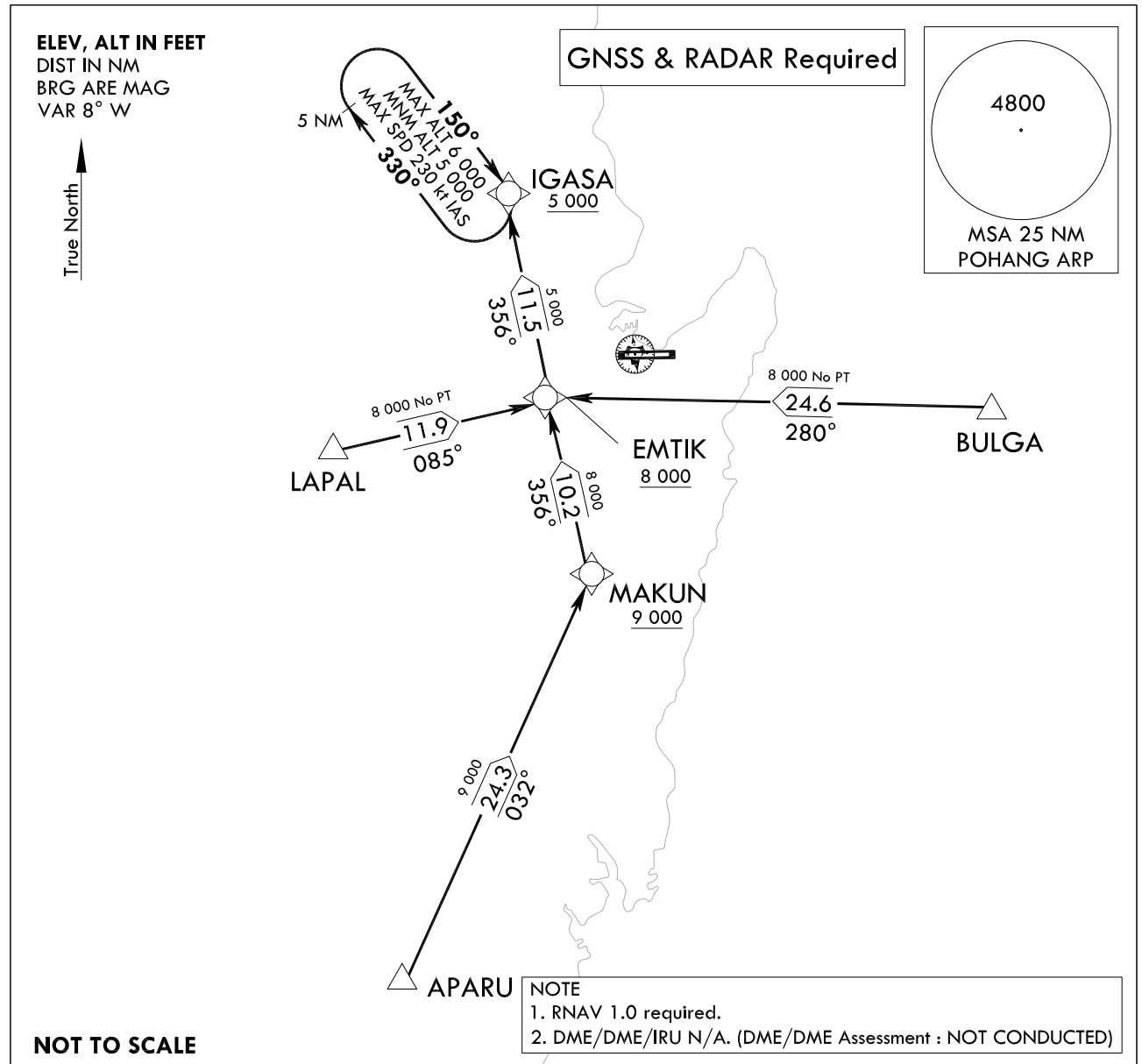
**STANDARD ARRIVAL CHART  
INSTRUMENT (STAR)**

TRANSITION ALT 14 000  
TRANSITION LVL FL 140

POHANG APP 124.25 120.2  
232.4  
POHANG TWR 118.05 236.6  
308.50

**POHANG/Pohang Gyeongju(RKTH)**  
**RNAV(GNSS) EMTIK 1**  
**RWY 10**

Note : Arrival under U.S TERPS.



**ARRIVAL ROUTE DESCRIPTION**

LAPAL TRANSITION : From LAPAL track 085° to cross EMTIK at or above 8 000 ft, thence...

APARU TRANSITION : From APARU track 032° to cross MAKUN at or above 9 000 ft, then track 356° to cross EMTIK at or above 8 000 ft, thence.....

BULGA TRANSITION : From BULGA track 280° to cross EMTIK at or above 8 000 ft, thence.....

LANDING RWY 10 : From EMTIK track 356° to cross IGASA at or above 5 000 ft, then expect RNAV approach.

Change : Information of aerodrome name(Pohang → Pohang Gyeongju).

POHANG/Pohang Gyeongju(RKTH)  
RNAV(GNSS) EMTIK 1  
RWY 10

## AERONAUTICAL DATA TURBULATION

## Standard Instrument Arrival Procedure Coding Tables

RNAV EMTIK 1 - LAPAL Transition												
Serial Number	Path Descriptor	Waypoint Identifier	Fly-over	Course/Track °M(°T)	Distance (NM)	Turn direction	Altitude (ft)	Speed (kt)	Coordinates	VPA/TCH	Navigation specification	Remarks
001	TF	LAPAL	-	-	-	-	-	-	35°54'12.6"N 129°04'52.0"E	-	RNAV 1	-
002	TF	EMTIK	-	085 (076.9)	11.9	-	+8 000	-	35°56'53.9"N 129°19'09.8"E	-	RNAV 1	-

RNAV EMTIK 1 - APARU Transition												
Serial Number	Path Descriptor	Waypoint Identifier	Fly-over	Course/Track °M(°T)	Distance (NM)	Turn direction	Altitude (ft)	Speed (kt)	Coordinates	VPA/TCH	Navigation specification	Remarks
001	TF	APARU	-	-	-	-	-	-	35°24'42.1"N 129°09'32.1"E	-	RNAV 1	-
002	TF	MAKUN	-	032 (024.4)	24.3	-	+9 000	-	35°46'53.0"N 129°21'52.8"E	-	RNAV 1	-
003	TF	EMTIK	-	356 (347.6)	10.2	-	+8 000	-	35°56'53.9"N 129°19'09.8"E	-	RNAV 1	-

RNAV EMTIK 1 - BULGA Transition												
Serial Number	Path Descriptor	Waypoint Identifier	Fly-over	Course/Track °M(°T)	Distance (NM)	Turn direction	Altitude (ft)	Speed (kt)	Coordinates	VPA/ TCH	Navigation specification	Remarks
001	TF	BULGA	-	-	-	-	-	-	35°56'08.6"N 129°49'24.4"E	-	RNAV 1	-
002	TF	EMTIK	-	280 (271.9)	24.6	-	+8 000	-	35°56'53.9"N 129°19'09.8"E	-	RNAV 1	-

RNAV EMTIK 1 - LANDING RWY 10												
Serial Number	Path Descriptor	Waypoint Identifier	Fly-over	Course/Track °M(°T)	Distance (NM)	Turn direction	Altitude (ft)	Speed (kt)	Coordinates	VPA/TCH	Navigation specification	Remarks
001	TF	EMTIK	-	-	-	-	-	-	35°56'53.9"N 129°19'09.8"E	-	RNAV 1	-
002	TF	IGASA	-	356 (348.3)	11.5	-	+5 000	-230	36°08'10.4"N 129°16'16.6"E	-	RNAV 1	-

## HOLDING PROCEDURE

Holding Identification	Path Descriptor	Waypoint Identifier	Fly-over	Course/Track °M(°T)	Distance (NM)	Turn direction	Altitude (ft)	Speed (kt)	Coordinates	VPA/TCH	Navigation specification	Remarks
RNAV RWY 10	HM	IGASA	-	150	5	R	-6 000 +5 000	-230	36°08'10.4"N 129°16'16.6"E	-	RNAV 1	Inbound Leg

Change : Information of aerodrome name(Pohang → Pohang Gyeongju).

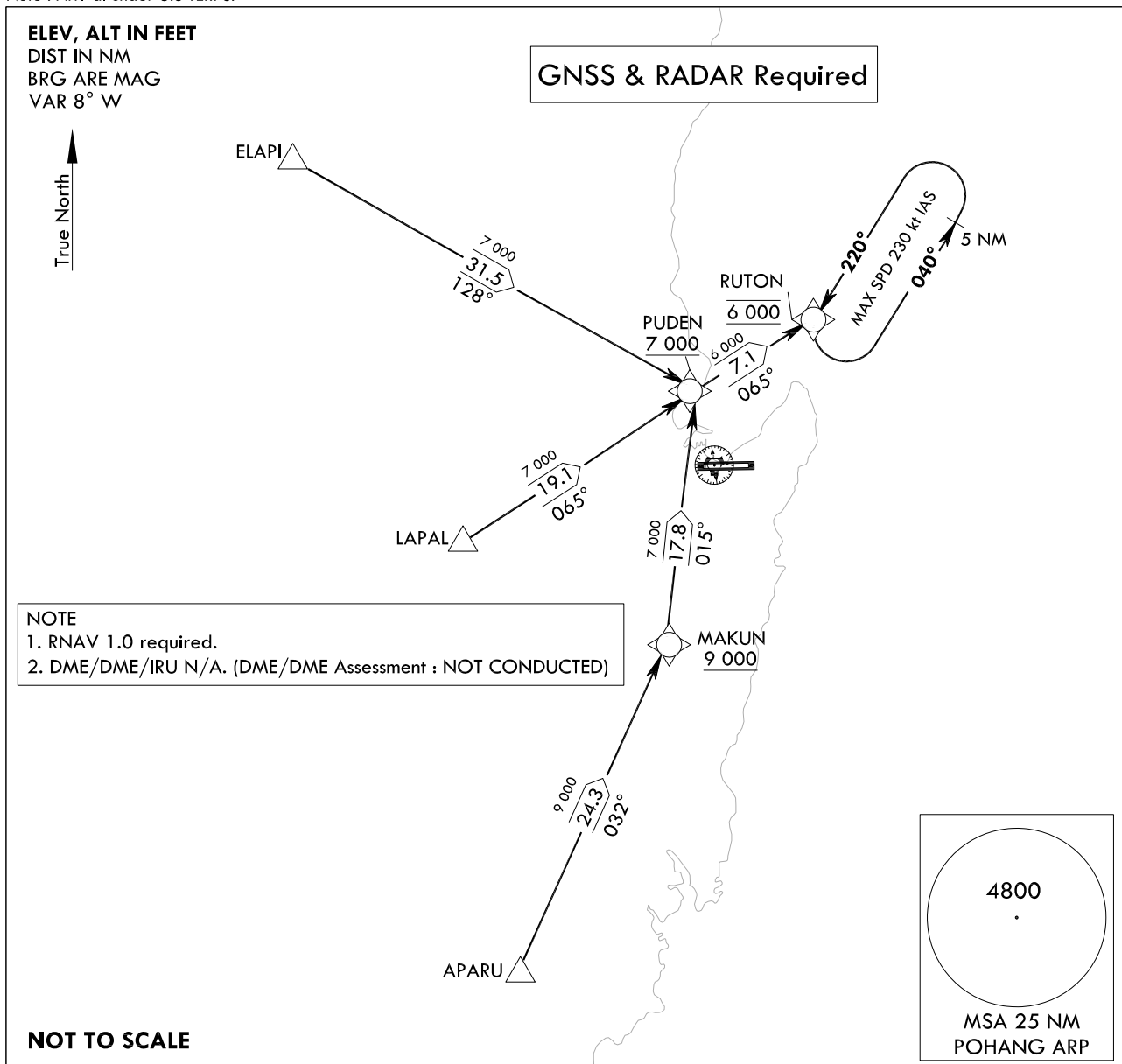
**STANDARD ARRIVAL  
CHART  
INSTRUMENT (STAR)**

TRANSITION	ALT	14 000
TRANSITION	LVL	FL 140

POHANG APP	124.25	120.2
	232.4	
POHANG TWR	118.05	236.6
	308.50	

**POHANG/Pohang Gyeongju(RKTH)**  
**RNAV PUDEN 1**  
**RWY 28**

Note : Arrival under U.S TERPS.



**ARRIVAL ROUTE DESCRIPTION**

ELAPI TRANSITION : From ELAPI track 128° to cross PUDEN at or above 7 000 ft, thence....

LAPAL TRANSITION : From LAPAL track 065° to cross PUDEN at or above 7 000 ft, thence....

APARU TRANSITION : From APARU track 032° to cross MAKUN at or above 9 000 ft, then track 015° to cross PUDEN at or above 7 000 ft, thence....

LANDING RWY 28 : From PUDEN track 065° to cross RUTON at 6 000 ft, then expect RNAV approach.

Change : Information of aerodrome name(Pohang → Pohang Gyeongju).

POHANG/Pohang Gyeongju(RKTH)  
RNAV PUDEN 1  
RWY 28

## AERONAUTICAL DATA TABULATION

## Standard Instrument Arrival Procedure Coding Tables

## RNAV PUDEN 1 - ELAPI Transition

Serial Number	Path Descriptor	Waypoint Identifier	Fly-over	Course/Track °M(°T)	Distance (NM)	Turn direction	Altitude (ft)	Speed (kt)	Coordinates	VPA/TCH	Navigation specification	Remarks
001	TF	ELAPI	-	-	-	-	-	-	36°20'14.1"N 128°50'50.9"E	-	RNAV 1	-
002	TF	PUDEN	-	128 (119.6)	31.5	-	+7 000	-	36°04'36.0"N 129°24'35.5"E	-	RNAV 1	-

## RNAV PUDEN 1 - LAPAL Transition

Serial Number	Path Descriptor	Waypoint Identifier	Fly-over	Course/Track °M(°T)	Distance (NM)	Turn direction	Altitude (ft)	Speed (kt)	Coordinates	VPA/TCH	Navigation specification	Remarks
001	TF	LAPAL	-	-	-	-	-	-	35°54'12.6"N 129°04'52.0"E	-	RNAV 1	-
002	TF	PUDEN	-	065 (057.0)	19.1	-	+7 000	-	36°04'36.0"N 129°24'35.5"E	-	RNAV 1	-

## RNAV PUDEN 1 - APARU Transition

Serial Number	Path Descriptor	Waypoint Identifier	Fly-over	Course/Track °M(°T)	Distance (NM)	Turn direction	Altitude (ft)	Speed (kt)	Coordinates	VPA/TCH	Navigation specification	Remarks
001	TF	APARU	-	-	-	-	-	-	35°24'42.1"N 129°09'32.1"E	-	RNAV 1	-
002	TF	MAKUN	-	032 (024.4)	24.3	-	+9 000	-	35°46'53.0"N 129°21'52.8"E	-	RNAV 1	-
003	TF	PUDEN	-	015(007.1)	17.8	-	+7 000	-	36°04'36.0"N 129°24'35.5"E	-	-	-

## RNAV PUDEN 1 - LANDING RWY 28

Serial Number	Path Descriptor	Waypoint Identifier	Fly-over	Course/Track °M(°T)	Distance (NM)	Turn direction	Altitude (ft)	Speed (kt)	Coordinates	VPA/TCH	Navigation specification	Remarks
001	TF	PUDEN	-	-	-	-	-	-	36°04'36.0"N 129°24'35.5"E	-	-	-
002	TF	RUTON	-	065 (057.2)	7.1	-	@6 000	-230	36°08'26.0"N 129°31'55.0"E	-	RNAV 1	-

## HOLDING PROCEDURE

Holding Identification	Path Descriptor	Waypoint Identifier	Fly-over	Course/Track °M(°T)	Distance (NM)	Turn direction	Altitude (ft)	Speed (kt)	Coordinates	VPA/TCH	Navigation specification	Remarks
RNAV RWY 28	HM	RUTON	-	220	5	L	@6 000	-230	36°08'26.0"N 129°31'55.0"E	-	RNAV 1	Inbound Leg

Change : Information of aerodrome name(Pohang → Pohang Gyeongju).